



VALE·DO PEREIRO

LISBOA



Live in a prestigious neighbourhood in the center of Lisbon.
For business or leisure, the area has everything to offer.
Your gateway to Europe is here.

Enjoy the exceptional character of Vale Pereiro building.
Designed by Swiss architects, this modern building offers
outstanding quality and comfort.

VALE·DO
PEREIRO
LISBOA

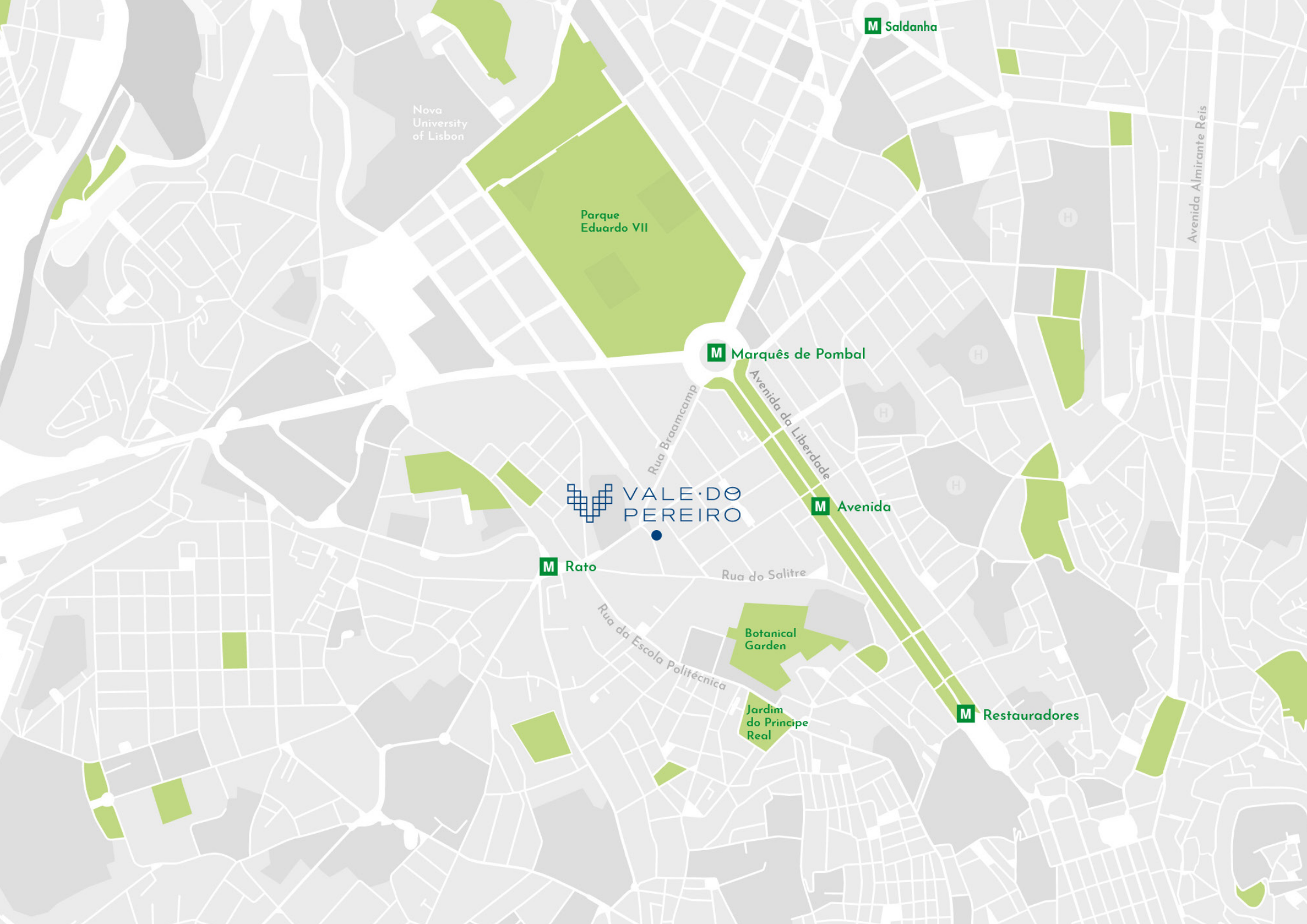


THE LOCATION

AN EXCLUSIVE AREA

Enjoy Lisbon's most prestigious neighbourhood.
Conveniently located in Rua Vale do Pereiro, the building is next to the Avenida da Liberdade, Lisbon's Champs Elysées. Whether for business or leisure, this central area has everything to offer: outstanding restaurants, luxury hotels and designer shops.





Nova
University
of Lisbon

Parque
Eduardo VII

VALE DO
PEREIRO

Botanical
Garden

Jardim
do Principe
Real

M Saldanha

M Marquês de Pombal

M Rato

M Avenida

M Restauradores

Avenida Almirante Reis

Rua Bramcamp

Avenida da Liberdade

Rua do Salitre

Rua da Escola Politécnica

THE APARTMENTS

A UNIQUE SPACE

Two penthouse apartments with extensive private terraces, an external helical staircase connects to an ample sun-deck above. The spacious living-dining room has direct exit to a terrace overlooking the street below, the exterior is fully glazed to break up the mass of this recessed floor.

The fully equipped kitchen also connects directly to the terrace and each penthouse includes two parking spaces and a storage room.





THE APARTMENTS

EXCEPTIONAL DESIGN

Enjoy unique character in every Vale Pereiro apartment.
From the Terrazzo floor tiles to the Valchromat panels and Lioz marble at the bathrooms and kitchen countertops, every detail has been carefully designed by the Swiss architects.
Materials and combinations has been chosen for their originality, refinement and long-lasting quality.





THE BUILDING DISTINCTIVE STYLE

Enjoy living in a building with character. The Cobalt blue tiled façade with its vibrant reflections renders homage to Lisbon's unique light. Inspired by Lisbon's traditions, the Swiss architects have created an elegant play of light on volumes. Their combination gives a unique personality to Vale Pereiro Building.




VALE DO
PEREIRO
LISBOA

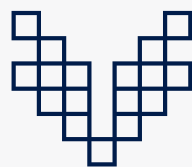
THE BUILDING

MODERN LIVING

Feel at home immediately. The thirteen apartments of the building offer great comfort and class. With white tiles and walls, light gently enters every living space. With wooden panels and marble, you feel in an exceptional place, where every detail has been carefully designed.







FLOORPLANS

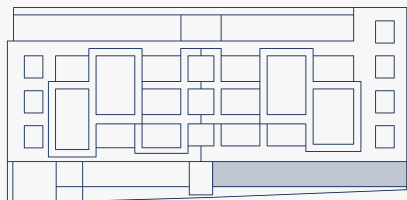
VALE·DO
PEREIRO

LISBOA



A

3 BEDROOM GARDEN APARTMENT
GROUND FLOOR



Living Area	176,15 m²
Exterior Area	116,12 m²
Storage Room	3,36 m²
Parking Spaces	2

1. Entrance	10,17 m2	6. Bedroom 1	16,68 m2	11. Bedroom 3	19,70m2
2. Bathroom	1,95 m2	7. Bathroom	4,50 m2	12. Winter Garden	8,42 m2
3. Kitchen	12,44 m2	8. Hall	11,35 m2	13. Garden	112,4 m2
4. Living Room	33,77 m2	9. Bedroom 2	16,35 m2		
5. Hall	4,50 m2	10. Bathroom	3,48 m2		



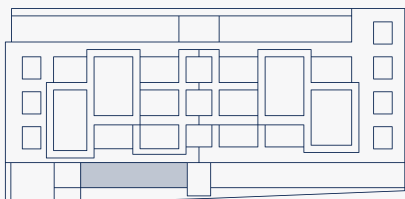
All plans, features and amenities depicted herein are based upon preliminary development plans, and are subject to change without notice.

All materials are shown solely for illustrative purposes. Furnishings are only included for illustration purposes and are not included in each apartment.

All rights reserved.

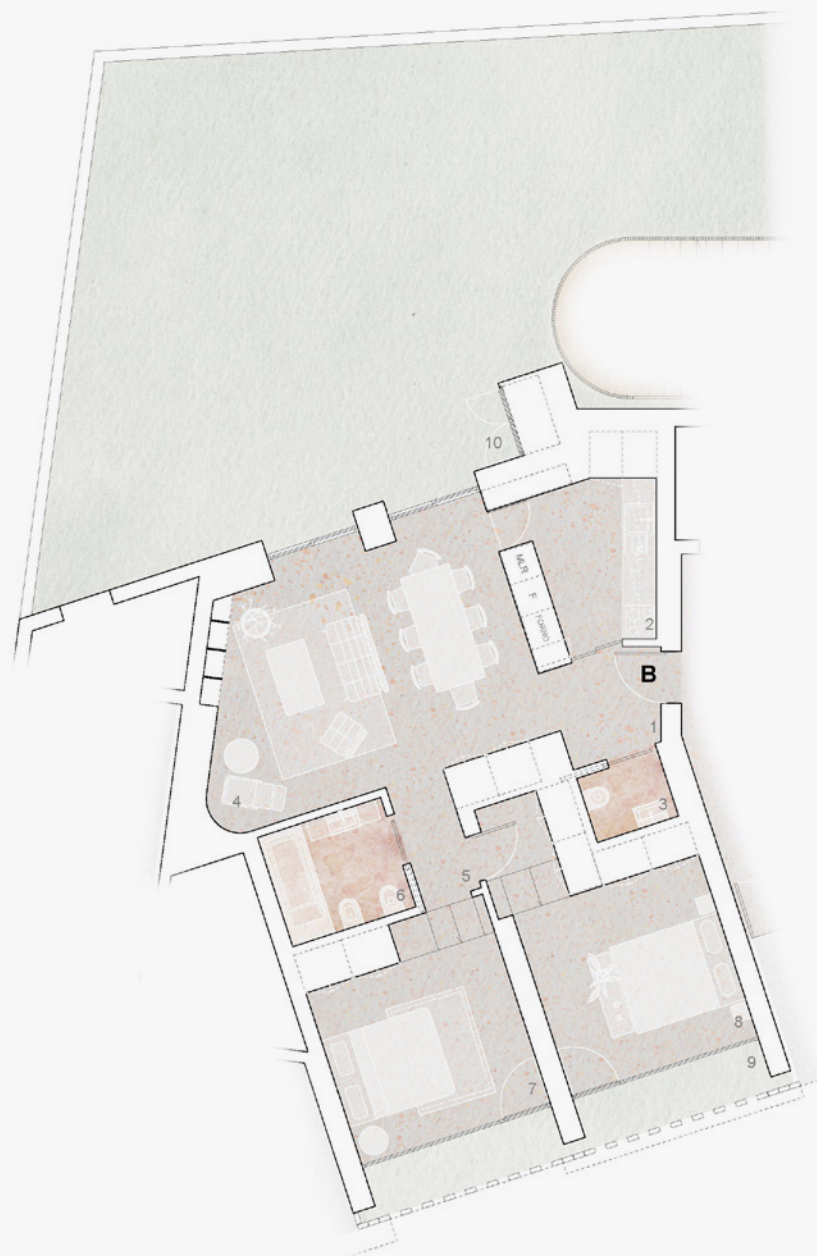
B

2 BEDROOM GARDEN APARTMENT
GROUND FLOOR



Living Area	99,74 m ²
Exterior Area	94,62 m ²
Storage Room	5,55 m ²
Parking Space	1

1. Entrance	3,78 m ²	6. Bathroom	4,76 m ²
2. Kitchen	9,40 m ²	7. Bedroom 1	14,01 m ²
3. Bathroom	1,95 m ²	8. Bedroom 2	16,95 m ²
4. Living Room	24,05 m ²	9. Winter Garden	6,66 m ²
5. Hall	2,32 m ²	10. Garden	90,11 m ²



All plans, features and amenities depicted herein are based upon preliminary development plans, and are subject to change without notice.

All materials are shown solely for illustrative purposes. Furnishings are only included for illustration purposes and are not included in each apartment.

All rights reserved.

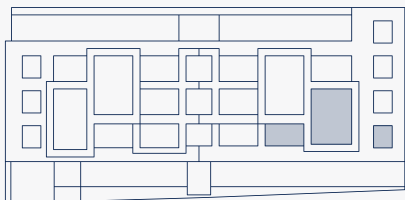


VALE·DO
PEREIRO

LISBOA

C

3 BEDROOM APARTMENT
1ST FLOOR



Living Area	167,27 m ²
Exterior Area	27,06 m ²
Storage Room	5,90 m ²
Parking Spaces	2



1. Entrance	7,20 m ²	6. Bedroom 1	12,20 m ²	11. Bedroom 3	15,52 m ²
2. Kitchen	11,49 m ²	7. Hall	2,30 m ²	12. Balcony	22,81 m ²
3. Living Room	57,41 m ²	8. Bedroom 2	16,33 m ²	13. Balcony	1,15 m ²
4. Hall	2,14 m ²	9. Bathroom	4,50 m ²		
5. Bathroom	4,41 m ²	10. Bathroom	2,82 m ²		



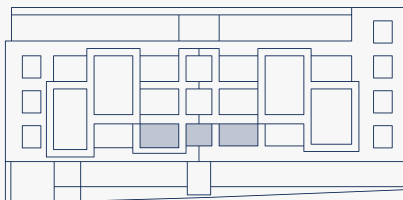
All plans, features and amenities depicted herein are based upon preliminary development plans, and are subject to change without notice.

All materials are shown solely for illustrative purposes. Furnishings are only included for illustration purposes and are not included in each apartment.

All rights reserved.

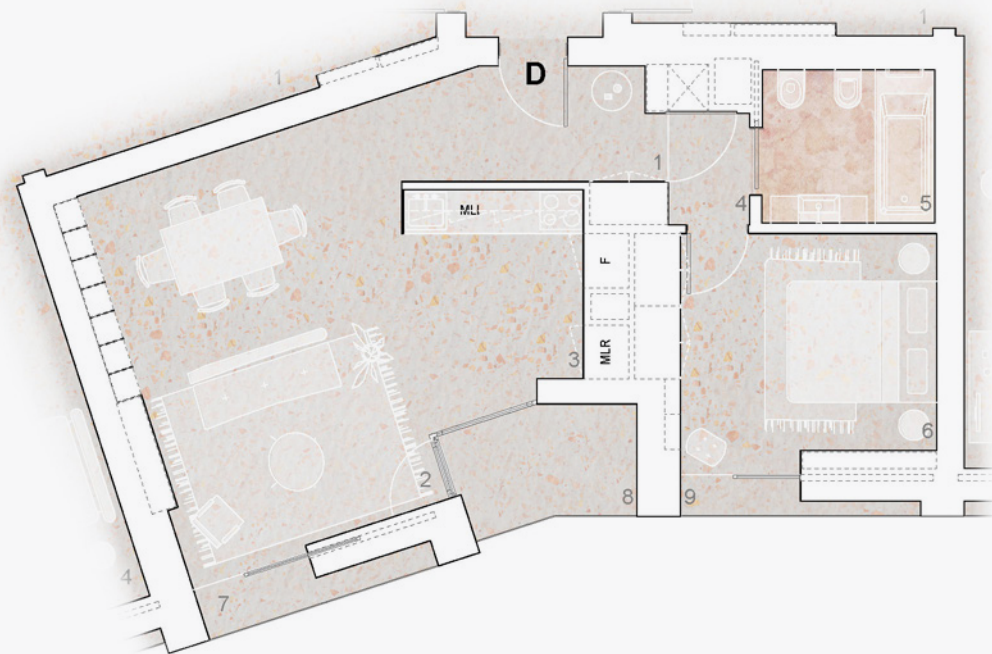
D

1 BEDROOM APARTMENT
1ST FLOOR



Living Area	64,42 m ²
Exterior Area	6,73 m ²
Storage Room	4,10 m ²
Parking Space	1

1. Entrance	5,00 m ²	6. Bedroom	12,45 m ²
2. Living Room	20,70 m ²	7. Balcony	1,26 m ²
3. Kitchen	7,69 m ²	8. Balcony	3,65 m ²
4. Hall	1,85 m ²	9. Balcony	1,26 m ²
5. Bathroom	4,78 m ²		



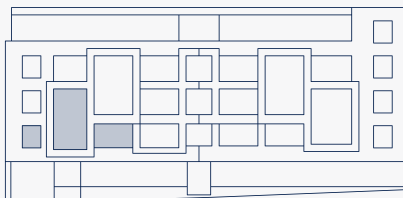
All plans, features and amenities depicted herein are based upon preliminary development plans, and are subject to change without notice.

All materials are shown solely for illustrative purposes. Furnishings are only included for illustration purposes and are not included in each apartment.

All rights reserved.

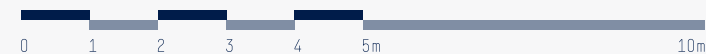
E

2 BEDROOM APARTMENT
1ST FLOOR



Living Area	141,82 m ²
Exterior Area	16,44 m ²
Storage Room	8,68 m ²
Parking Space	1

1. Entrance	11,00 m ²	6. Bathroom	4,26 m ²	11. Balcony	1,90 m ²
2. Bathroom	1,95 m ²	7. Bedroom 1	13,23 m ²	12. Balcony	1,12 m ²
3. Kitchen	14,13 m ²	8. Bathroom	3,02 m ²		
4. Living Room	48,90 m ²	9. Bedroom 2	15,18 m ²		
5. Hall	3,94 m ²	10. Balcony	13,26 m ²		



All plans, features and amenities depicted herein are based upon preliminary development plans, and are subject to change without notice.

All materials are shown solely for illustrative purposes. Furnishings are only included for illustration purposes and are not included in each apartment.

All rights reserved.

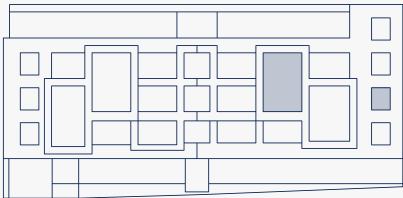


VALE·DO
PEREIRO

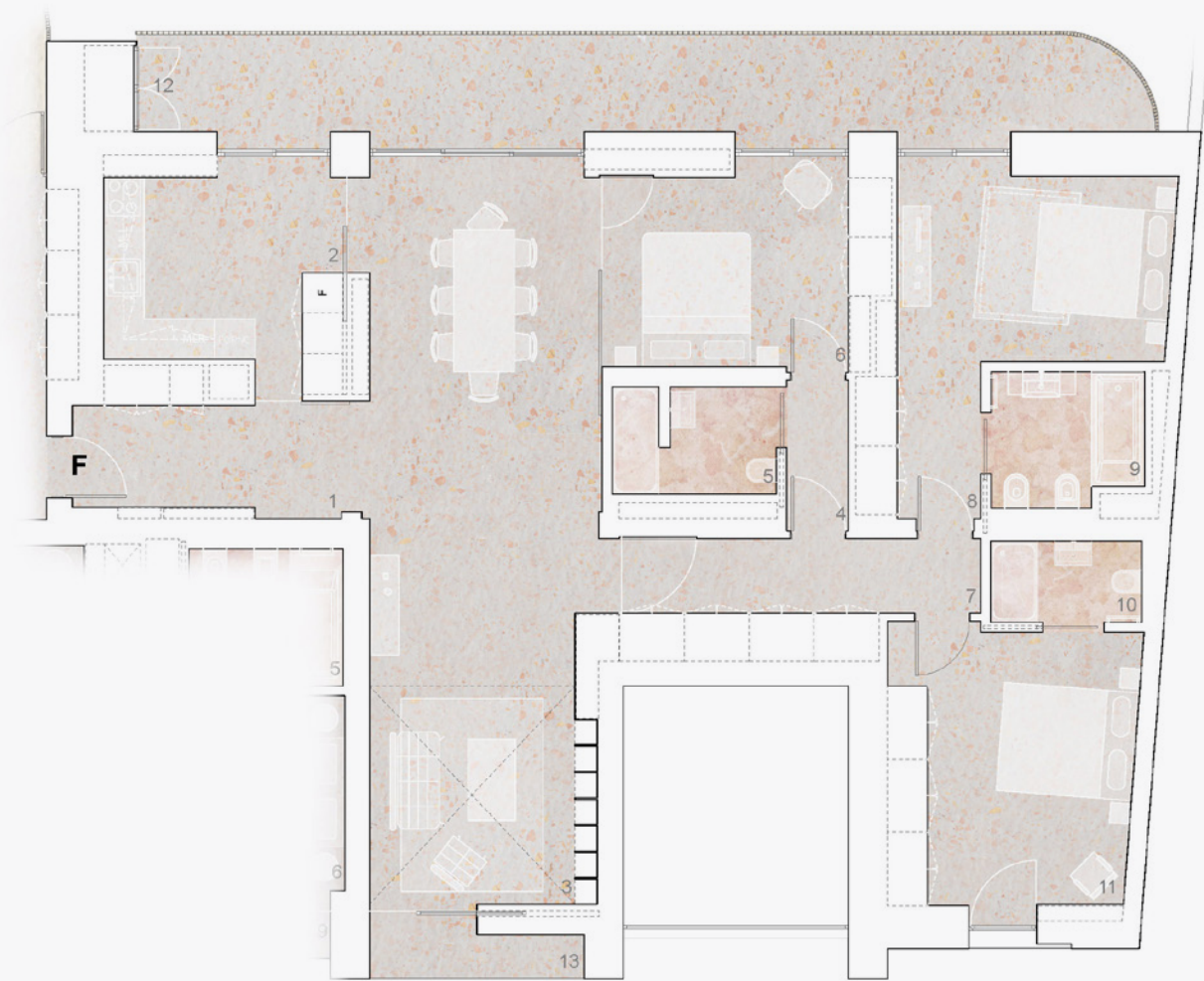
LISBOA

F

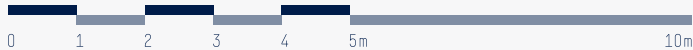
3 BEDROOM APARTMENT
2ND FLOOR



Living Area	152,46 m ²
Exterior Area	26,10 m ²
Storage Room	6,34 m ²
Parking Spaces	2



1. Entrance	7,20 m ²	6. Bedroom 1	12,35 m ²	11. Bedroom 3	15,53 m ²
2. Kitchen	11,49 m ²	7. Hall	1,64 m ²	12. Balcony	22,81 m ²
3. Living Room	41,61 m ²	8. Bedroom 2	15,57 m ²	13. Balcony	2,22 m ²
4. Hall	2,15 m ²	9. Bathroom	4,50 m ²		
5. Bathroom	4,41 m ²	10. Bathroom	2,82 m ²		



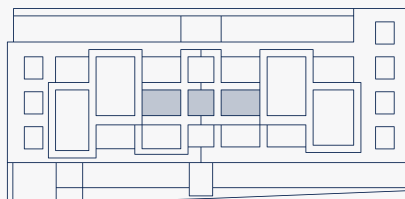
All plans, features and amenities depicted herein are based upon preliminary development plans, and are subject to change without notice.

All materials are shown solely for illustrative purposes. Furnishings are only included for illustration purposes and are not included in each apartment.

All rights reserved.

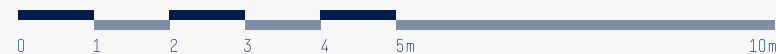
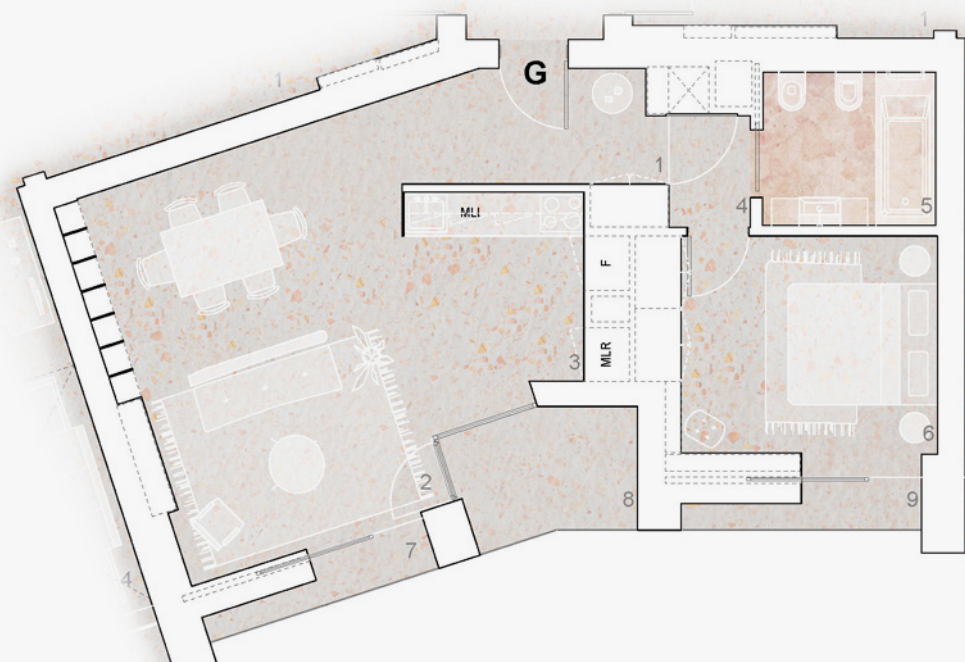
G

1 BEDROOM APARTMENT
2ND FLOOR



Living Area	64,42 m ²
Exterior Area	7,67 m ²
Storage Room	4,17 m ²
Parking Space	1

1. Entrance	5,00 m ²	6. Bedroom	12,45 m ²
2. Living Room	20,70 m ²	7. Balcony	1,26 m ²
3. Kitchen	7,69 m ²	8. Balcony	3,98 m ²
4. Hall	1,85 m ²	9. Balcony	1,28 m ²
5. Bathroom	4,78 m ²		



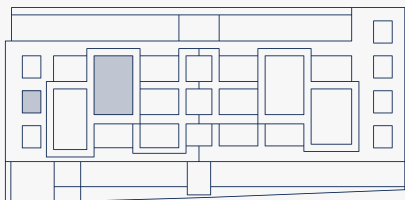
All plans, features and amenities depicted herein are based upon preliminary development plans, and are subject to change without notice.

All materials are shown solely for illustrative purposes. Furnishings are only included for illustration purposes and are not included in each apartment.

All rights reserved.

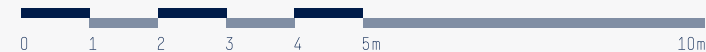
H

2 BEDROOM APARTMENT
2ND FLOOR



Living Area	129,48 m ²
Exterior Area	16,24 m ²
Storage Room	8,68 m ²
Parking Space	1

1. Entrance	10,87 m ²	5. Hall	3,55 m ²	9. Bedroom 2	14,33 m ²
2. Bathroom	1,95 m ²	6. Bathroom	4,15 m ²	10. Balcony	13,26 m ²
3. Kitchen	14,13 m ²	7. Bedroom 1	13,50 m ²	11. Balcony	2,24 m ²
4. Living Room	36,97 m ²	8. Bathroom	3,022 m ²		



All plans, features and amenities depicted herein are based upon preliminary development plans, and are subject to change without notice.

All materials are shown solely for illustrative purposes. Furnishings are only included for illustration purposes and are not included in each apartment.

All rights reserved.

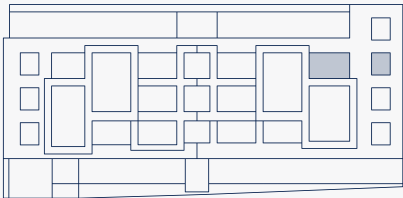


VALE·DO
PEREIRO

LISBOA

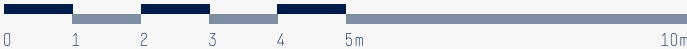


3 BEDROOM APARTMENT
3RD FLOOR



Living Area	152,95 m ²
Exterior Area	26,06 m ²
Storage Room	8,68 m ²
Parking Space	2

1. Entrance	6,99 m ²	6. Bedroom 1	16,79 m ²	11. Bathroom 3	15,98 m ²
2. Kitchen	11,49 m ²	7. Bathroom	4,50 m ²	12. Balcony	22,81 m ²
3. Hall	1,92 m ²	8. Bedroom 2	18,66 m ²	13. Balcony	2,32 m ²
4. Living Room	37,58 m ²	9. Bathroom	3,48 m ²		
5. Hall	4,46 m ²	10. Bathroom	2,82 m ²		



All plans, features and amenities depicted herein are based upon preliminary development plans, and are subject to change without notice.

All materials are shown solely for illustrative purposes. Furnishings are only included for illustration purposes and are not included in each apartment.

All rights reserved.



Living Area	64,42 m ²
Exterior Area	7,67 m ²
Storage Room	5,60 m ²
Parking Space	1

1. Entrance	5,00 m2	6. Bedroom	12,45 m2
2. Living Room	20,70 m2	7. Balcony	1,26 m2
3. Kitchen	7,69 m2	8. Balcony	3,98 m2
4. Hall	1,85 m2	9. Balcony	1,28 m2
5. Bathroom	4,78 m2		

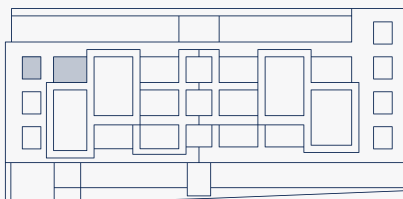
All plans, features and amenities depicted herein are based upon preliminary development plans, and are subject to change without notice.

All materials are shown solely for illustrative purposes. Furnishings are only included for illustration purposes and are not included in each apartment.

All rights reserved.

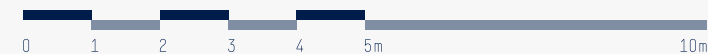
K

2 BEDROOM APARTMENT
3RD FLOOR



Living Area	127,31 m ²
Exterior Area	15,95 m ²
Storage Room	10,13 m ²
Parking Space	1

1. Entrance	10,95 m ²	5. Hall	2,54 m ²	9. Bedroom 2	11,33 m ²
2. Bathroom	1,95 m ²	6. Bathroom	3,29 m ²	10. Balcony	13,26 m ²
3. Kitchen	13,99 m ²	7. Bathroom	4,50 m ²	11. Balcony	1,93 m ²
4. Living Room	36,04 m ²	8. Bedroom 1	15,33 m ²		



All plans, features and amenities depicted herein are based upon preliminary development plans, and are subject to change without notice.

All materials are shown solely for illustrative purposes. Furnishings are only included for illustration purposes and are not included in each apartment.

All rights reserved.

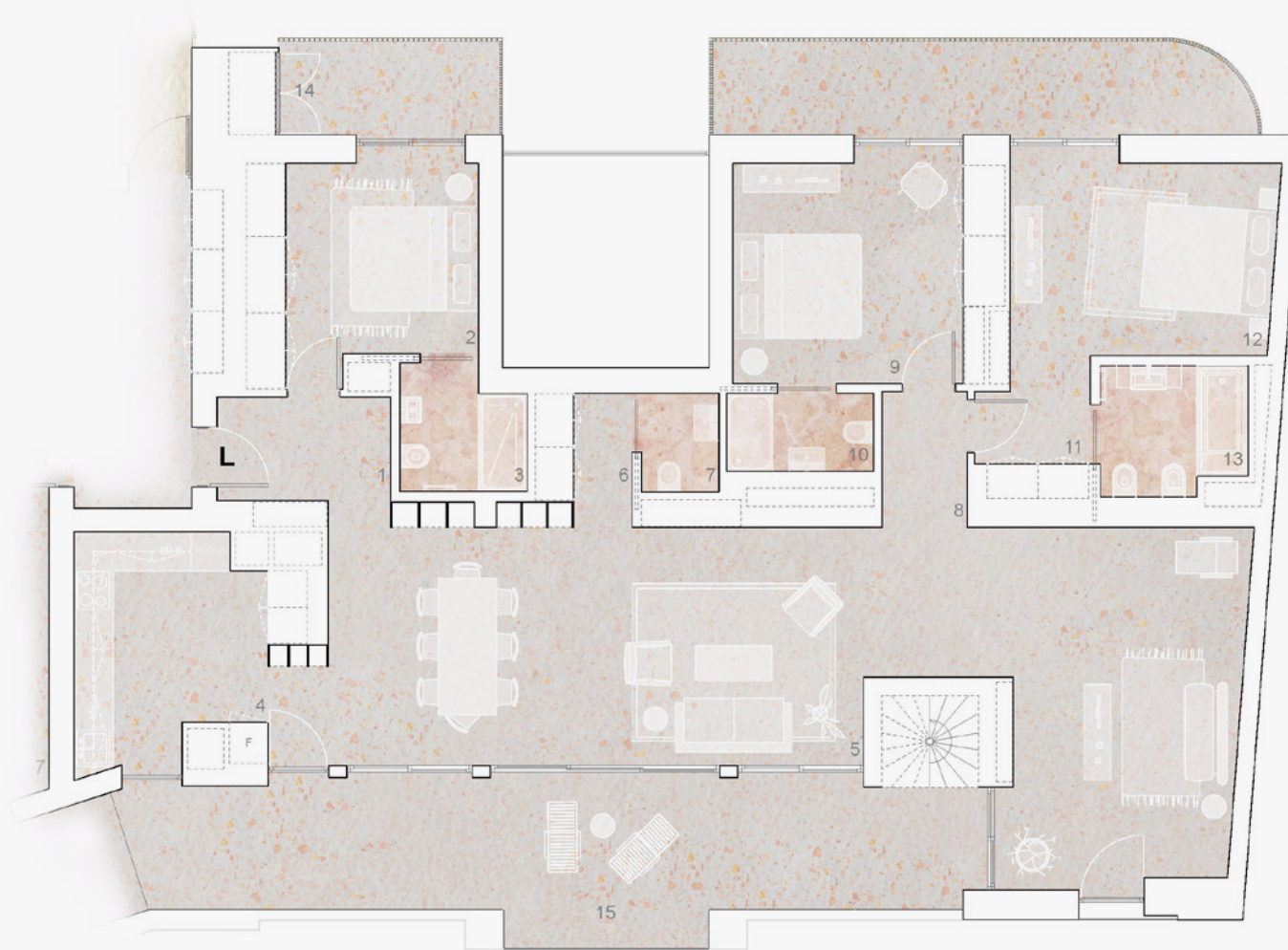
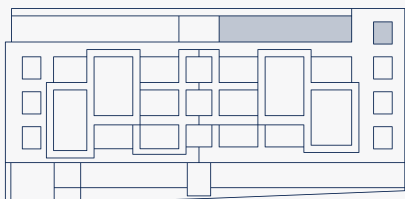


VALE·DO
PEREIRO

LISBOA



3 BEDROOM PENTHOUSE
4TH FLOOR



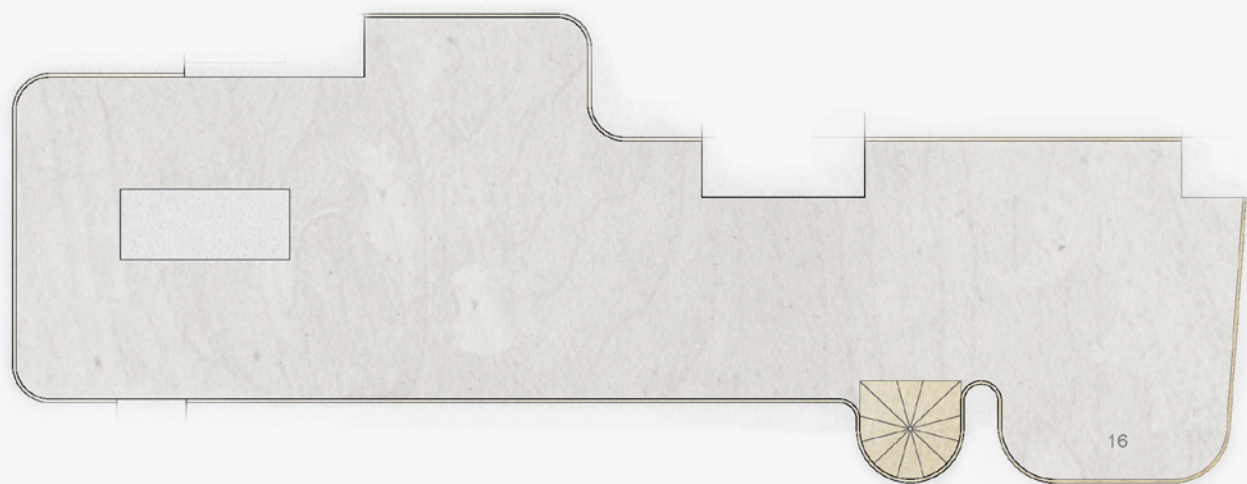
Living Area	164,60 m ²
Exterior Area	80,00 m ²
Storage Room	9,40 m ²
Parking Spaces	2

1. Entrance	4,94 m ²	6. Hall	2,83 m ²	11. Bedroom 2	16,50 m ²
2. Bedroom 1	11,77 m ²	7. Bathroom	1,93 m ²	12. Bathroom	4,50 m ²
3. Hall	3,65 m ²	8. Hall	2,80 m ²	13. Balcony	6,08 m ²
4. Kitchen	12,55 m ²	9. Bedroom 1	14,22 m ²	14. Balcony	11,99 m ²
5. Living Room	56,65 m ²	10. Bathroom	2,82 m ²	15. Terrace	27,41 m ²

All plans, features and amenities depicted herein are based upon preliminary development plans, and are subject to change without notice.

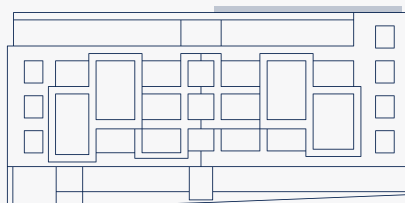
All materials are shown solely for illustrative purposes. Furnishings are only included for illustration purposes and are not included in each apartment.

All rights reserved.



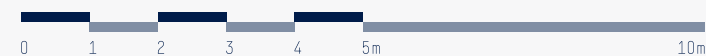
L

3 BEDROOM PENTHOUSE
5TH FLOOR



Living Area	164,60 m ²
Exterior Area	80,00 m ²
Storage Room	9,40 m ²
Parking Spaces	2

16. Solarium	53,70 m ²
--------------	----------------------



All plans, features and amenities depicted herein are based upon preliminary development plans, and are subject to change without notice.

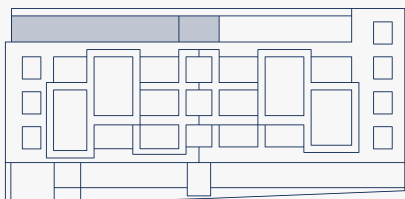
All materials are shown solely for illustrative purposes. Furnishings are only included for illustration purposes and are not included in each apartment.

All rights reserved.



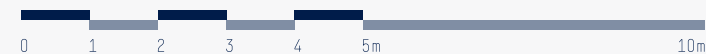
M

2 BEDROOM PENTHOUSE
4TH FLOOR



Living Area	114,58 m ²
Exterior Area	131,81 m ²
Storage Room	10,69 m ²
Parking Spaces	1

1. Entrance	11,88 m ²	6. Bathroom	4,51 m ²
2. Bathroom	1,95 m ²	7. Living Room	37,80 m ²
3. Bedroom 1	12,54 m ²	8. Kitchen	11,39 m ²
4. Bathroom	2,46 m ²	9. Balcony	10,40 m ²
5. Bedroom 2	12,52 m ²	10. Terrace	43,00 m ²



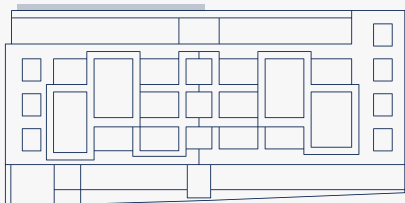
All plans, features and amenities depicted herein are based upon preliminary development plans, and are subject to change without notice.

All materials are shown solely for illustrative purposes. Furnishings are only included for illustration purposes and are not included in each apartment.

All rights reserved.

M

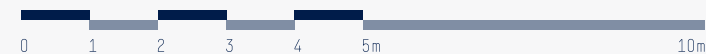
2 BEDROOM PENTHOUSE
5TH FLOOR



Living Area	114,58 m ²
Exterior Area	131,81 m ²
Storage Room	10,69 m ²
Parking Spaces	1



11. Solarium	58,27 m ²
--------------	----------------------



All plans, features and amenities depicted herein are based upon preliminary development plans, and are subject to change without notice.

All materials are shown solely for illustrative purposes. Furnishings are only included for illustration purposes and are not included in each apartment.

All rights reserved.



PARTNERS



Developer of the Vale Pereiro project, Capvest is an international real estate services provider. It offers integrated services in asset management & investment, development and advisory.



NOMOS is a Swiss architect firm with a partner office in Lisbon. With a vast experience in residential projects, it creates original and high quality living spaces.



FFC is a real estate project management company. Based in Lisbon, it has been involved in some of the city's most successful property developments.



Focus Group is a multinational engineering company based in Lisbon. It works on the preparation and implementation of projects and studies for private and public entities.



Novo Banco, S.A. is a reference institution in the Portuguese financial system. It provides various products and services to private, corporate, and institutional customers.

VALE·DO
PEREIRO

LISBOA

DISCLAIMER



All residential units have an A rated Energy efficiency pre-certificate, according to the Law (Dec-Lei n ° 118/2013).

All plans, features and amenities depicted herein are based upon preliminary development plans, and are subject to change without notice.

All images and designs depicted herein are artists' conceptual renderings, which are based upon preliminary development plans, and are subject to change without notice. All such materials are shown solely for illustrative purposes. Furnishings are only included for illustration purposes and are not included in each apartment.

The project graphics, renderings and text provided herein are copyrighted works. All rights reserved. Unauthorized reproduction, display or other dissemination of such materials is strictly prohibited and constitutes copyright infringement.



VALE·DO PEREIRO

LISBOA

WWW.VALEPEREIRO.PT